

# The Construction Clients' Group Auckland



**Construction  
Clients' Group**  
CONSTRUCTING EXCELLENCE



## Meeting No. 77 Invites you to join us in exploring Productivity

**When: Wednesday 15 February 2017**  
**Time: 7:00am to 10:00am**  
**Host: RCP**  
**Where: 6 Fox St, Parnell, Auckland 1052**  
**Focus Area: Improving the Cost of Ownership**

### Productivity

#### Procurement

Procurement practices - modern, efficient and effective.

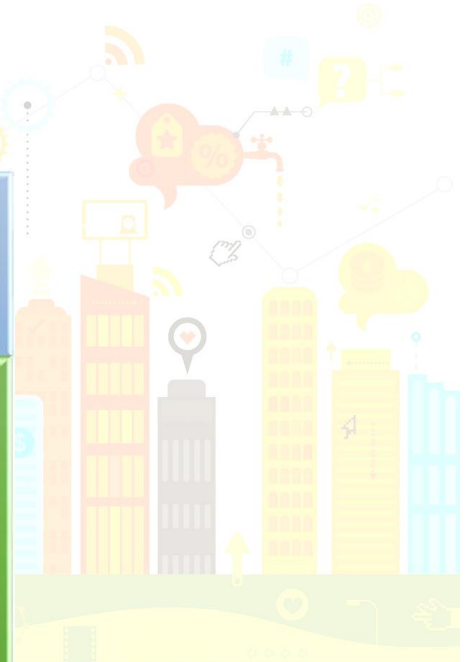
Market engagement - allowing the industry to gain from a better understanding of clients' drivers and forward work plan.

#### Improving the Cost of Ownership

To build and own - whole life cost.

Understanding the drivers:

- of costs of ownership
- in the market place



- 07:00am**    **Tea, Coffee and light breakfast**
- 07:30am**    **Welcome**  
Ian Wheeler, CCG Auckland Chair
- 07:35am**    **Host Introduction**  
Graham Stanage, Director, RCP

**Sharing ■ Learning ■ Innovating ■ Together**

Contact: Jo Conway: [jconway@constructing.co.nz](mailto:jconway@constructing.co.nz)

Telephone: 09 585 2218 Register: <http://www.constructing.co.nz/Events/?eventID=364>

This event may be considered for contributing to a recognised Continuing Professional Development (CPD) scheme as part of personal development. Delegates should check their individual scheme requirements.

# The Construction Clients' Group Auckland



**Construction  
Clients' Group**  
CONSTRUCTING EXCELLENCE



## Meeting No. 77 Invites you to join us in exploring Productivity

- 07:45am Commercial Bay Case Study Update**  
led by Jeremy Hay, Managing Director, RCP  
**Part 1: Construction Update**
- 08:15am Commercial Bay Case Study Update**  
Steve Gracey, Managing Director, Rider Levett Bucknall  
**Part 2: Achieving Lower Costs in Building and Ownership**  
[Find out more about the Commercial Bay project](#)
- 08:45am Morning Tea**
- 09:00am Ideas for breaking the cost inflation norm**  
Shane Brealey
- 09:30am Facilitated Workshop – Mitigating Constraints around lowering clients' Costs of Building and Ownership**  
Led by Ian Wheeler, CCG Auckland Chair
- 10:00am Close**



**Sharing ■ Learning ■ Innovating ■ Together**

Contact: Jo Conway: [jconway@constructing.co.nz](mailto:jconway@constructing.co.nz)

Telephone: 09 585 2218 Register: <http://www.constructing.co.nz/Events/?eventID=364>

This event may be considered for contributing to a recognised Continuing Professional Development (CPD) scheme as part of personal development. Delegates should check their individual scheme requirements.